



Keeler



Keeler

Innovator, market leader, with a focus on the future

When you buy a Keeler instrument – what are you buying? Almost a century of experience in optics!

Keeler has been manufacturing ophthalmic instruments since 1917. We continue to lead the market with our innovative instruments. This has been achieved through our continuous program of customer involvement in the design process to ensure our instruments meet the rigorous demands of daily practice.

UK manufacturer

Yes, we still manufacture and assemble our instruments in the UK.

Keeler instruments combine optical precision, high quality illumination, ergonomic design and lightweight, durable materials to provide you with the best possible choice of equipment.



Reliability

The warranty on the following equipment is 3 years.

- Direct Ophthalmoscopes
- Retinoscopes
- Indirect Ophthalmoscopes (LED Option 5 Years)
with the exception of batteries, bulbs and power supplies.

All other products carry a one year parts and labor warranty.

Warranty covers repair or replacement of equipment that malfunctions due to faulty materials or workmanship.



Service

Keeler Technical Services and our authorized distributor network will carry out repairs and routine maintenance to your equipment.

We offer a Service Exchange scheme covering most direct and indirect ophthalmoscopes. This is a quick and economic way of keeping your instruments in top working order.

Quotations can be supplied upon request.



Contents

Binocular Indirect Ophthalmoscopes	4-17	Surgical Loupes	32-35
Digital Vantage Plus LED	6-7	SuperVu SL Mini Loupes	32
Vantage Plus	8-11	SuperVu SL Galilean System	32
All Pupil II	12-13	SuperVu SL Hi-Res Galilean System	33
All Pupil II LED	13	Keeler Sport Frame	33
Spectra Plus	13	SuperVu XL Prismatic System	34
Wireless Power Supply Options	14-15	K-L.E.D. head light	34
Wired Power Supply Options	16		
Slit Lamps	18-19	Cryo Surgical System	36-37
PSL Hand Held Slit Lamp	18	Keeler Cryomatic	36
		Keeler Cryomatic Probes	37
		Keeler Cryomatic Stand (Trolley)	37
Tonometry	20-22	Keeler Surgical Room Supplies	38-39
Keeler Pulsair EasyEye Non Contact Tonometer	20-21	Keeler Chan Wristrest	38
	21	Surgical Foam Headrest	38
KAT - Keeler Applanation Tonometers	22	Disposable Drape Support	39
		Machemer Stool	39
Direct Ophthalmoscopes	24-28	LED Modules, Bulbs and Accessories	40-42
Professional Ophthalmoscope	26	LED Modules & Bulbs	40-41
Specialist Ophthalmoscope	26	Indirect Ophthalmoscope Cases	41
Professional Combi Retinoscope	27	Indirect Ophthalmoscope Accessories	42
Pocket Ophthalmoscope	27	Direct Ophthalmoscope Accessories	42
Wide Angle Twin Mag	28		
Direct Ophthalmoscope Power Supplies and Handles	29		
Lithium-ion Double Charger	29		
Lithium-ion Mini Charger	29		
Handles and Lithium Adapter	29		
Sight and Color Vision Testing	30-31		
Sheridan Gardiner Test	30		
3rd Edition City University Color Vision Test	30		
38 x 24 Plate Ishihara Color Vision Test	30		
Halberg Trial Lens Clips	31		
Maddox Wing Test	31		
Keeler Horizontal Vertical Prism Bar	31		
Keeler Retinoscopy Pack	31		
Amsler Manual	31		



Binocular Indirect Ophthalmoscopes

Since 1957, when we introduced the Fison, our first binocular indirect ophthalmoscope, Keeler has developed a reputation as the innovator in the development and manufacture of indirect ophthalmoscopes. 2003 was no exception and saw the introduction of the first Keeler "Wireless" indirect ophthalmoscopes available on our All Pupil or Vantage Plus models.

Go Wireless gives you the freedom to move from room to

room without any constraints - No more wires, cords, tangles, just a lightweight, well balanced, comfortable indirect ophthalmoscope.

The next couple of pages will guide your choice but first read on to discover the benefits shared by all Keeler indirect ophthalmoscopes as standard.



Go
wireless 

with Vantage Plus and All Pupil II - the
market leading indirect ophthalmoscopes!

Wired or Wireless - Keeler Leads The Way

Since 1957, when we introduced the Fison, our first binocular indirect ophthalmoscope, Keeler has developed a reputation as the innovator in the development and manufacture of indirect ophthalmoscopes. 2003 was no exception and saw the introduction of the first Keeler "Wireless" indirect ophthalmoscopes available on our All Pupil or Vantage models. Go Wireless gives you the freedom to move from room to room without any constraints - no more wires, cords, tangles, just a lightweight, well balanced, comfortable indirect ophthalmoscope.

When you choose a Keeler indirect ophthalmoscope you are guaranteed the following benefits in all of our instruments as standard.



Clear, Sharp Images – Enclosed KeeView Optics™

All Keeler indirect optics are specially coated and individually laser aligned to provide the sharpest clearest images every time you use your indirect, time after time, after time.

Comfort and Balance

Lightweight materials are used throughout the design of each unit; combined with soft cushioning and a non slip contoured shaped headband to maximise comfort and balance. These features will be particularly appreciated during long examinations.

Easy-Fit "Push In/Pull Out" LED Modules & Bulbs

Keeler indirects have been designed to ensure optimal performance. LED Modules & bulbs are easily accessible and quick to change.

Adjustable Brilliant Illumination

Why have all of the controls on the wall when the instrument is on your head. On All Pupil and Vantage the illumination rheostat is located on the headband providing easily accessible fully controllable light.

Keeler indirects have the brightest illumination that can be turned down to as low as 2% of maximum required.

Wide Angle Diffuser

The Keeler wide angle diffuser eliminates shadows on the edge of the condensing lens expanding the field of view significantly, which is particularly useful during difficult and peripheral examinations. There is also less discomfort for the patient because the light is softer.



Apertures and Filters



Red Free - This filter is used to examine blood vessels in fine detail. By filtering out the red light, blood vessels are silhouetted against a green background.



Cobalt Blue - This filter is used with fluorescein dye for angiography.



Large Aperture - Ideal when examining fully dilated pupils.



Intermediate - Ideal for children and sensitive patients.



Small Aperture - Ideal for undilated pupils.



Diffuser

NEW Vantage Plus LED Digital Ophthalmoscope

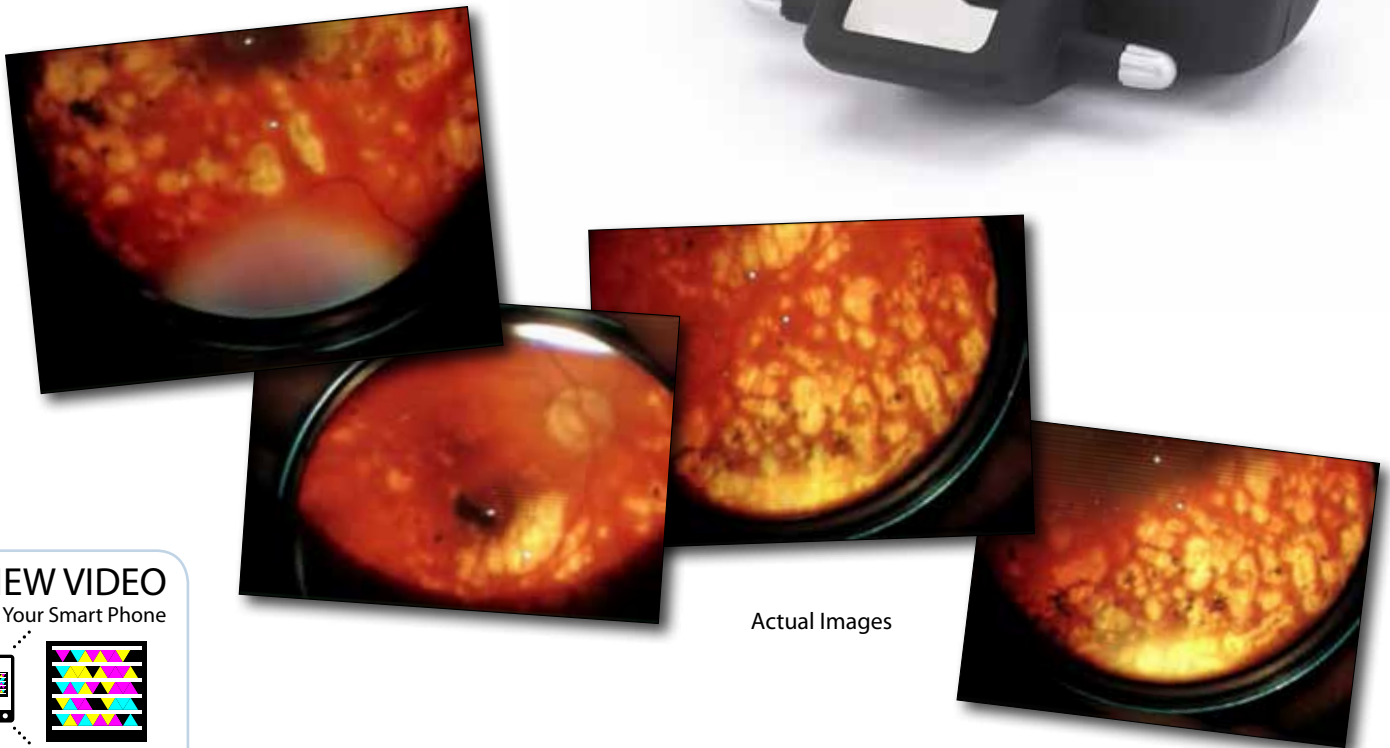
Digital Imaging in your office, operating room, or anywhere you want it.

As the world leader in binocular indirect technology we lead the way again with the first digital binocular indirect system. Not old analog video but true digital imaging.

Utilize Vantage Plus LED Digital Wireless in your office, operating room, and teaching facility or anywhere you want to capture digital images.

The intuitive and powerful Keeler Software allows you to use your laptop or any usb interface to optimize the examination, provide still or dynamic images, which aid in the documentation and diagnosis of your patient.

Increase your practice profile by educating your patients and their family with digital dynamic imaging in your office.



Actual Images

VIEW VIDEO

On Your Smart Phone



Get the free mobile app at
<http://gettag.mobi>



USB interface	Plugs into any laptop or computer system and examinations are recorded in digital format.	
Keeler Software	For easy Still or Dynamic Imaging, Storage, and Documentation.	
Vantage Plus LED Slimline Wireless	Built on the number one selling LED and wireless slimline system.	
Part Numbers	1205-P-5010	Vantage Plus LED Digital Wireless Ophthalmoscope System.
Includes	Vantage Plus LED Digital Wireless Ophthalmoscope Docking Station and power supply, additional Slimline Polymer battery, Keeler Software, Digital Wireless Remote Control, and Carrying Case.	
Accessory	1205-P-7001	Optional Vantage Plus LED Digital Footswitch.

Technical Specifications

Camera

Interface	USB 2. mini B
Supply	Taken from USB 2 Interface
Resolution	To test pattern 6 of group 2 on the 1951 USAF TEST PATTERN (conforms to MIL-STD 150A standard), when used in combination with a 20D lens
Driver	When installed will work with any video package capable of receiving video input from a USB source
Lead	To connect camera to a PC, Keeler recommends a 5m long USB 2.0A to a mini 5 pin (sometimes packaged as a USB 2.0A to a mini B lead)

Convergence

Range	The camera can be adjusted ± 7 degrees
-------	--

Variable working distance

Range	11-24 inches
-------	--------------

Vantage Plus

Controls	All controls and features of the Vantage Plus have been maintained
----------	--

Adjustment

Vertical adjustment	The vertical adjustment is achieved by rotating the adjustment screw on the mirror holder. The image should be adjusted such that the light patch is in the centre
---------------------	--

Horizontal adjustment	Factory set
-----------------------	-------------

Focus	See working distance
-------	----------------------

Physical

Size	The Vantage Plus Digital is approx 50mm longer than the standard Vantage Plus.
Weight	The total weight of the complete Vantage Plus Digital is 662g (Vantage Plus is 596g)



The Environment

Keeler is the only company that is committed to reducing material waste and we welcome our competitors to join in this effort by implementing LED technology into their products.

Fact: A conventional incandescent bulb lasts 60 hours.

Fact: An LED lasts 10,000 hours.

Fact: A general fundus exam utilizing a binocular indirect could take as long as 3 minutes per patient.

Over the lifetime of your binocular indirect utilizing a bulb for illumination, the environment can be polluted with over 167 bulbs as compared to the light of a single Keeler LED.



If everyone switched to a Keeler LED, we can save 3.3 million bulbs from our landfills. Imagine; 3.3 million less pieces of glass, hard metals, plastic & gas polluting our environment.

Now, are we saying that you're going to single handedly save the planet by choosing Keeler? No...but it's a good start.

NEW Vantage Plus

Bright white illumination for a superior retinal view

We are delighted to announce that the Vantage Plus comes standard with our new LED module as well as a traditional bulb.

The LED cooler color temperature provides brighter illumination, longer battery life, and freedom from purchasing bulbs. The LED life expectancy is up to 10,000 hours.

Clinically, the superior optics combined with the LED illumination could provide greater detail, allowing you to find retinal pathology that was not visible with the Xenon bulb BIO's.



Our new Vantage Plus LED Module comes standard with all Vantage Plus systems. You can also upgrade your previous Vantage Plus bulb system with our LED module.



Longest life, brightest, better detail



25% brighter than standard bulbs



New Slimline Lithium Polymer battery weighs less than 2 ounces



Combined LED and Lithium Polymer battery can provide up to 6 hours of use on a single charge

"The cooler color temperature of the LED light source resulted in a level of image clarity that I've not found in another BIO"

"I have been able to find retinal pathology that was not visible with the Xenon bulb BIOs in our clinic."

Todd J. Purkiss, M.D., Ph.D.,
Chief Resident, Ophthalmology & Visual Sciences,
University of Louisville

Unique - Intelligent Optical System (IOS)

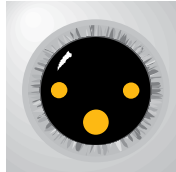
(Patent pending)

At last - now when you change the aperture the optics and mirrors automatically adjust for you, without the need to flip another lever!

Keeler has designed this unique one step movement to make your examinations easier and faster. The (IOS) mechanism (patent pending) means that when you select the small, medium or large aperture the optics automatically adjust, providing 3 dimensional stereoscopic views of the retina through all pupil sizes.

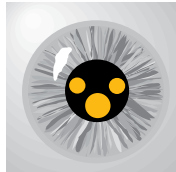
Large Pupil

When looking through a large fully dilated pupil the optics are separated and the light source remains in the upper position, achieving maximum stereopsis.



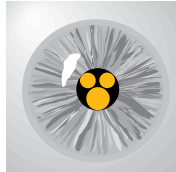
Intermediate Pupil

The viewing optics and light sources are in a 'mid position' for maximum stereopsis.

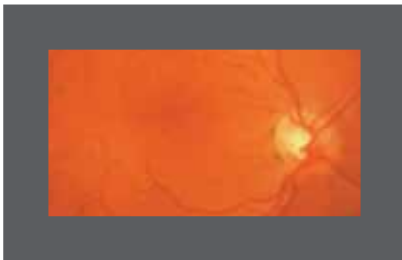


Small Pupil

When looking through a small pupil the viewing optics and light source are converged to allow you to view the retina through the smallest pupils stereoscopically.



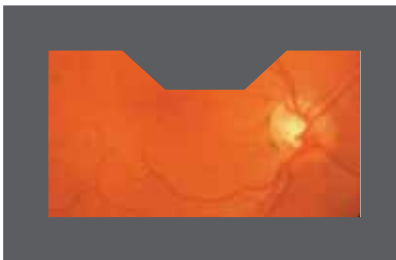
Exclusive - IOS Optics allows Small Pupil Imaging without any obstructions



Vantage Plus IOS Optics

View through Vantage Plus with IOS Optics.

When small pupil is selected there is no obstruction of the retina.



Non IOS Optic System

View through NON IOS Optical Systems.

When small pupil is selected there is an obstruction, reducing your clinical information.

The new teaching mirror just slides on and off with ease

The new teaching mirror just slides on and off with ease allowing two observers to view the retina at the same time.





Unique - The new HiMag™ (patented) lens just slides on and off with ease

This unique feature is only offered with the Vantage Plus indirect. It gives you a 1.6X additional magnification than with a condensing lens alone, providing superb stereoscopic images.

Scratch resistant coated optics guarantee high quality images at all times and HiMag™ can be simply flipped out of view when not required.



Quality and efficiency

The redesigned optics combined with the new LED or Xenon light source offer brighter high definition retinal images - PLUS you get more life from whichever Keeler battery (Metal Hydride or Lithium) you use.

15% lighter

The Vantage Plus uses advanced textured engineering materials, providing a lighter, smaller and more compact instrument without compromising the renowned Keeler reputation for robustness, reliability and quality.

Comfortable and perfectly balanced

A new soft cushioned headband has been designed to maximise comfort, it adjusts and balances perfectly to suit all head shapes and sizes.



New high contrast optics

The new compact and high contrast viewing optics use LED or Xenon illumination that gives you brilliantly crisp, glare free, superior views of the retina every time.



Brighter

Filters and Apertures

IR/UV filters are built into the optics of the Vantage Plus with optional filters and a choice of 3 apertures plus a soft light diffuser.

P D Range: 52 - 76mm



"Because of the brightness and improved contrast, I prefer the Vantage Plus LED Indirect (and you get a Hi Mag lens too)."

Vincent A Dermo, MD
North Shore-LIJ Health System
Great Neck, NY
"ROAD TEST", Heine & Keeler Wireless Indirect
Ophthalmoscopes, Retina Times, Summer 2009

All Pupil II

Now Available with LED Technology

All Pupil II is based on the design of the number one selling All Pupil indirect. Look out for the new features designed to make your examinations easier and more comfortable.

Go Wireless (Patented)

That's right, no more wires and cords! The freedom to move from room to room without any constraints. Keeler is delighted to introduce this great "wow" feature to the number one selling indirect ophthalmoscope.

Outstanding Brightness for Difficult Examinations

With 2000 lux of light, which can be turned down to 2% of total illumination when necessary, All Pupil II offers maximum illumination with total control.



P D Range: 47 - 75mm



All Pupil II LED Module

The All Pupil II LED plugs simply into the back of your All Pupil II to give you all the benefits of LED illumination.

- LED provides better detail, brighter, whiter illumination
- Freedom from purchasing bulbs
- The LED life expectancy is up to 10,000 hours
- 5 year warranty



Lightweight and Comfortable

The new design weighs just 520 grams and extra padded materials have been incorporated into the headband to make this indirect extremely comfortable for all examinations.

Simple Controls

The All Pupil II has a unique single control to change aperture size and position in one movement to view through all pupil sizes.

IR and UV barrier

There is a built in full time IR and UV barrier which guarantees improved patient protection and safety.



Longest life, brightest, better detail



25% brighter than standard bulbs



New Slimline Lithium Polymer battery weighs less than 2 ounces



Combined LED and Lithium Polymer battery can provide up to 6 hours of use on a single charge

All Pupil II LED Slimline

Same Great AllPupil II Optics!



New Slimline Lithium Polymer Battery

The New Slimline Lithium Polymer battery can give you up to 6 hours of use, weighs less than 2 ounces, and is nearly 70% lighter than the standard battery. It is also much smaller and can fit nicely into the palm of your hand.



Lighter



Long lasting



Our new Slimline Lithium Polymer Battery is as light and as small as the new mini iPod.



New Slimline Lithium Polymer battery
(paper clip shows scale)

Spectra Plus

The Compact and Portable Choice

Portable and convenient

The new Keeler Spectra Plus has some big features. It has been designed as a portable, lightweight convenient indirect that can be tucked away in its neat carrying case.

LED long lasting illumination

...and - unbelievable - no more bulbs

That's right. No more bulbs! Just a long lasting, white homogenous light patch.

P D Range: 48 - 76mm



Keeler Stylish Frame

Spectra Plus comes on the new stylish Keeler frame that is not only attractive but provides maximum comfort and balance.

Colors: Sky Blue, Blue, Red, and Black.



Wireless Power Supply Options

Keeler wireless technology allows you to move from room to room without any constraints. The chargers are either desktop or wall mountable, and store an extra lithium battery as a back up, should you need it.

"I used the Plus almost daily for four months before I had to recharge the battery"

Todd J. Purkiss, M.D., Ph.D., Chief Resident,
Ophthalmology & Visual Sciences,
University of Louisville

New Slimline Lithium Polymer Battery

Now exclusive with Vantage Plus and available for the All Pupil II LED, the Slimline Lithium Polymer battery can give you up to 6 hours of use, weighs less than 2 ounces, and is nearly 70% lighter than the standard battery. It is also much smaller and can fit nicely into the palm of your hand.



Lighter



Long lasting



New Slimline Lithium Polymer Battery - exclusive for Vantage Plus and available for All Pupil II LED (paper clip shows scale)



Standard Lithium Battery

Never run out of power

Keeler wireless system comes standard with two lithium batteries; and they last so long, it may take months before you need to charge them again. You now can choose which battery suits your needs.

Standard Lithium Battery

Our original lithium battery is only available for All Pupil II wireless systems. It lasts up to 11 hours of use and fits neatly into the charging unit.



Long lasting



New Slimline Lithium Polymer Battery
(Exclusive with Vantage Plus and available for All Pupil II LED)



Standard Lithium Battery
(All Pupil II only)

New Slimline Wireless Charger

The new desktop or wall mountable charger remains as durable as the Standard Wireless with the facility to store your extra battery in the top compartment. The charger has an easy release button to remove your extra battery.



Standard Wireless Charger
(All Pupil II only)



New Slimline Wireless Charger
(Exclusive with Vantage Plus and
available for All Pupil II LED)

Which system is right for you?

Indirect Usable Life		
Power Source	LED	Bulb
Slimline Battery	6 hours*	1.5 hours*
Standard Battery	11 hours*	2.5 hours*
SmartPack	17 hours*	4.25 hours*

* This measurement is based upon the illumination being used at normal examination power. Slimline option not available for All Pupil II traditional bulb system. Standard battery option is not available for the Vantage Plus system.

Wired Indirect Power Supply



Smart Pack

Smart Pack is a stylish power supply system that combines 3 options in one product. No longer will you need to purchase a portable system for domiciliary use, another system for mounting on your wall and another for tabletop use. All you need now is SmartPack for your Vantage Plus or All Pupil II.



Long lasting

Fast Charge and Long Life – Nickel Metal Hydride

- Lightweight
- 120 minutes of continuous use
- Complete Fast charge in 2 hours.
- Indirect can be used while charging
- Usable charge in 5 minutes
- Intelligent Chargers that show the state of your battery

Fast Charge and Long Life Lithium-ion Power

- Lightweight 6 ounces (171 grams)
- 2 hours of continuous use with Vantage Plus
- 4 hours of continuous use with Spectra Plus
- Fast Charge 2 hours
- Usable charge in 5 minutes



Long lasting



WallPack

With other manufactured indirect systems you need to purchase a separate stationary unit when you graduate. With your Smart Pack you can easily convert to Wall Pack which fits neatly on the wall and has a built in microswitch control.

Lithium-ion Power Pack

The Lithium Power Pack was designed to optimize your power requirements in a light weight system. Made exclusively for use with Spectra Plus, the battery is supplied with a small fast charge system.



Part Numbers

Vantage Plus Indirect Ophthalmoscope

Vantage Plus wired & wireless indirects come standard with an LED module, standard traditional bulb, HiMag lens and dimmer control

- ☐ 1205-P-1010 LED Wired Headset Only
- ☐ 1205-P-1020 LED Slimline Wireless (2) with Charger & Two (2) Batteries
- ☐ 1205-P-1014 LED Slimline Wireless (2) Headset Only (No Battery/Charger)

Vantage Plus LED Digital Indirect Ophthalmoscope

- ☐ 1205-P-5010 Vantage Plus LED Digital Wireless Ophthalmoscope, Slimline Docking Station, and power supply, additional Slimline Polymer battery, Keeler Software, Digital Wireless Remote Control, and Carrying Case
- ☐ 1205-P-7001 Optional Vantage Plus LED Digital Footswitch

All Pupil II Binocular Indirect Ophthalmoscope

All Pupil II Wired & Wireless Indirects come Standard with a Dimmer Control

Bulb Illumination

- ☐ 1204-P-3100 Bulb Wired Headset Only
- ☐ 1204-P-4000 Bulb Standard Wireless with Charger & Two (2) Batteries
- ☐ 1202-P-6237 Bulb Standard Wireless Headset Only (No Battery/Charger)

LED Illumination

- ☐ 1205-P-2002 LED Wired Headset Only
- ☐ 1205-P-2001 LED Standard Wireless with Charger & Two (2) Batteries
- ☐ 1205-P-2004 LED Standard Wireless (1) Headset Only (no Battery/Charger)
- ☐ 1205-P-2000 LED Slimline Wireless with Charger & Two (2) Batteries
- ☐ 1205-P-2003 LED Slimline Wireless (2) Headset Only (No Battery/Charger)

Spectra Plus Binocular Indirect Ophthalmoscope

Spectra Plus comes standard with the optics, frame, lithium power pack, and charger.

Spectra with standard temples (135mm)

- ☐ 1205-P-1000 Blue
- ☐ 1205-P-1001 Red
- ☐ 1205-P-1002 Black
- ☐ 1205-P-1003 Sky Blue

Spectra with long temples (150mm)

- ☐ 1205-P-1004 Blue
- ☐ 1205-P-1005 Red
- ☐ 1205-P-1006 Black
- ☐ 1205-P-1007 Sky Blue

Wired Indirect Power Supplies

- ☐ 1945-P-1001 SmartPack
- ☐ 1945-P-1000 WallPack
- ☐ 1941-P-5385 Spectra Plus Lithium Charger and Power Supply
- ☐ 1919-P-5215 Spectra Plus Lithium Battery with Rheostat

Keeler PSL Classic Portable Slit Lamp

Excellence in optics, versatility and portability are key benefits of the Keeler PSL Classic

Precision machined aluminum chassis

Keeler designed and manufactured with the strength to withstand the daily traumas of the demanding ophthalmic environment. Lightweight, durable and robust.

Advanced optics, x10 & x16 magnifications

Top quality multi layered glass is crafted into our Keeler multi-element and multi-layer coated optical system to give maximum performance. Clarity is guaranteed.

Controllable illumination

Proven halogen illumination system with over 2,000 hours of bulb life; illumination levels are controlled by a rheostat giving you control of your examination parameters. From zero to maximum, you choose.

Constant Power Technology

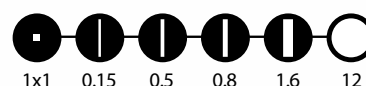
Keeler's PSL has the unique ability to work off the integrated lithium-ion battery OR simultaneously charge your battery and use the power from your AC outlet. No more dead batteries or charger down-time.

Advanced Array of Apertures & Filters

The PSL offers you the widest range of choice between apertures & filters of ANY portable slit lamp on the market, including the 1mm square light patch for assessing a/c flare.



Slit wheel



Filter wheel

Red free, Blue, Neutral density (0.8) and Clear



PSL features an integrated fixation target and built in red-free filter



Sturdy aluminum case fits PSL and all accessories



"The Slit Lamps are brilliant"

Mr. Manoj Parelukar
Cons. Paed. Ophth.
Birmingham Children's Hospital

Slit and filter system

Slit type	Rotating Slit wheel selection Slit Lamp
Slit length	12mm
Slit widths	0.15mm, 0.5mm, 0.8mm and 1.6mm slits, 12mm circle and a 1mm square
Filters	Red free, Blue, Neutral density 0.8 and Clear
IR protection	Inbuilt IR cut filter
Slit angle	+/- 60°
Illumination control	Continuously variable from low to full brightness
Fixation targets	LED system, double click of trigger
Power supply	
Power supply unit	Switch mode, (110V – 240V) +/- 10% multi-plug
Power supply output	30VA (12V DC 2.5A)
Biomicroscope	
Type	Binocular Hand held Biomicroscope Slit Lamp
Optics	Converging binoculars at 13°
Magnification	10x and 16x, lever change
Objective lens working distance @ 10x	16mm

PSL System

3010-P-2000 Keeler PSL Classic Slit Lamp - Illumination body and magnification optics, base charger, power supply (switch mode: all voltages & frequencies), user manual, and a spare 6V-15W lamp in a carton.

Accessories

3010-P-7000 PSL Carrying Case
3010-P-7002 PSL Replacement Bulb 6V-15W Lamp
3010-P-7004 Replacement Eyecaps (2)
EP59-47130 Replacement Lithium-Ion Battery
EP39-70737 Test Bar

PSL in its charging base and can sit safely by itself on a flat surface



Tonometry

Keeler has led the field in tonometry since the introduction of the Pulsair in 1987, and has continued to do so through four generations of the product. Each generation is a milestone of technological development providing you with ever accurate and reliable diagnostic tools.

To complement the hand-held Pulsair Easyeye we offer you other solutions: convertible hand-held to a desktop product. Whatever your need, we have the answer.



Keeler Pulsair EasyEye®

Accurate and effortless non-contact tonometry

The only non-contact tonometer with seventeen years experience and clinical study makes this fourth generation development the new gold standard.

Exceptional reliability combined with the versatility of being hand-held gives you the ultimate in non-contact tonometry for all your patients.



- Clear display, showing the average of readings taken, in millimetres of mercury (mmHg).
- Displays all readings taken for the measured eye.
- This button clears the memory ready for the other eye.
- This illuminates when a pressure exceeds 30mmHg and automatically increases the puff intensity accordingly.
- Viewing eyepiece – allows fast and simple alignment for rapid measurement - please see alignment process below.
- Quickpulse – reduces the sensitivity for dry or damaged corneas.
- Use the demo button to puff your patient's hand to prepare them for measurement.



Look through the eyepiece and you will see the patient's eye.



Move the Pulsair closer.



As you get closer you see two green dots. Continue to move closer.



Next you will see this. Slowly move closer.



When you see the bow tie the Pulsair will fire.

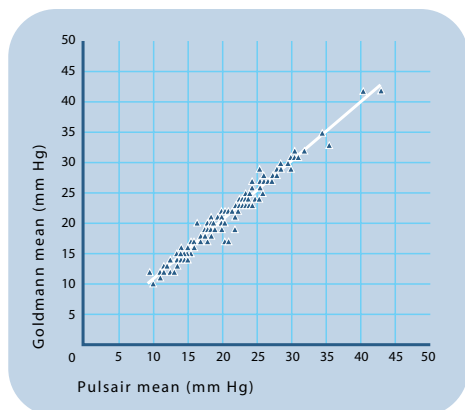


If you see this filament you are too close.



Accuracy

Extensive clinical trials and over seventeen years of experience in air tonometry has resulted in the EasyEye® rivalling Goldmann as the gold standard; "...as accurate as Goldmann tonometry in the population studied and has distinct advantages".*



Portability

The EasyEye® is truly portable; simply add the optional rechargeable battery and carrying case.



Space saving

Wall mount or Slit Lamp mount your EasyEye® to save valuable workspace.



Wall Mounted

Easy to use

The intuitive controls, a comfortable handpiece with an automated firing, averaging and printing system - what more could you need? Turn it on, take the handpiece and start using it.



Non-contact

Non-contact tonometry – no anaesthetic or fluorescein, no costly consumables and virtually no possibility of any cross infection of diseases.



Slit Lamp Mounted

All patients

Whether your patients are post operative or supine, disabled and unable to reach a chinrest, or simply young children in the arms of a parent, the EasyEye® is effective, accurate and patient friendly for all.



Speed

The EasyEye® has clinically proven speed; "...the Pulsair can provide an accurate measurement of IOP within 20 seconds per eye".*

Accuracy and calibration

Checking of calibration is easy; should your EasyEye® require maintenance simply send it to an authorized Keeler distributor, or to Keeler.

Part Numbers	2414-P-2000	Keeler Pulsair EasyEye® Tonometer complete
		Accessories
	2414-P-7003	EasyEye Carrying Case
	2414-P-7006	EasyEye Haag type Slit Lamp Adaptor
	2414-P-7005	EasyEye Chinrest Base System
	2414-P-7000	EasyEye Rechargeable Battery

*Extracted from Clinical Comparisons of the Keeler Pulsair with Goldmann applanation tonometry by Parker, Herrtage & Sarkies, British Journal of Ophthalmology, November 2001 Vol 85, No. 11 p 1303-1304

KAT - Keeler Applanation Tonometers

Reliable and repeatable applanation tonometry

Keeler - British manufacturing experience and quality delivering great value

For over 90 years, Keeler has continued to innovate, design and manufacture world class ophthalmic instruments in our Windsor (UK) factory.

The Keeler Applanation Tonometer (KAT) is a perfect example of our skills; we have applied 21st Century design techniques to an old established principle to deliver a premium quality instrument

The Goldmann applanation principle is widely acclaimed as the most common and direct method of assessing IOP. The KAT is made with precision machined components that are subject to stringent quality controls before, during and after assembly in our Windsor (UK) factory to add reliability and repeatability to an established technique.



KAT Tonometers

2414-P-2030 KAT T type

2414-P-2040 KAT R type

KAT Accessories

3414-P-7000 Aluminum case

2414-P-5001 Doubling prism

2414-P-5005 Calibration arm assembly

2414-P-5032 T type guide plate

2414-P-5042 R type post

Specifications

Measurement force

By leverage weight

Installation:

Keeler T-Type: for tower illumination Slit Lamps

Keeler R-Type: for tower illumination Slit Lamps

Fitted to the guide plate on the optical axis
for the microscope and illumination unit arm
Mountable on a post fitted to the microscope optical body

Measurement Range

0-80 mmHg (0-10.64 kPa)

Approximation of the impact force on the measurement head for a 0 to 58.84 mN measurement range

Standard divergence:
 $0.49\text{mN} \leq 2s \leq 1.5\%$ of nominal value

Measurement accuracy

$\leq 0.49\text{ mN}$

Net weights

Keeler T-Type

0.41 kg (without accessories)

Keeler R-Type

0.69 kg (without accessories)

The Keeler₃ Trade In Program

Offer Ends Soon!

Get a
Free Keeler Indirect
When You
Buy Any 3 Keeler Indirects,
& Trade-In Any 3 Indirects



Buy 3 | Trade 3 | Get 1 Free

The Power of 3. Purchase any 3 Keeler indirects between now and November 30, 2010, trade in 3 of your old indirects and we'll send you a 4th Keeler indirect absolutely free of charge - worth up to \$3,000!

No muss...no fuss...no hub bub. How's that for stimulus?

Some restrictions apply. Contact Keeler or your preferred Keeler Distributor today for details.

Direct Ophthalmoscopes

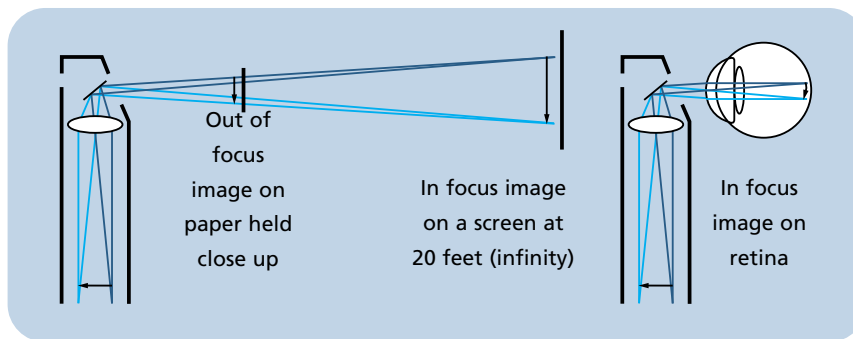
A combination of optical perfection, superb ergonomics and versatile features make Keeler direct ophthalmoscopes the ideal choice. Whatever your requirements from basic examination to detailed diagnosis, there is a Keeler ophthalmoscope for you. The next couple of pages will guide your choice but first read on to discover the benefits shared by all Keeler ophthalmoscopes as standard.

The Specialist -
the World's
finest direct
ophthalmoscope



Keeler optical system – the more you see the better the diagnosis

Keeler Ophthalmoscopes are adjusted for perfect focus where it's needed - in the eye, not on paper. Along with Keeler's wide angle light beam and individual mirror alignment, this ensures that whatever the patient's pupil size, you will see the clearest view of the retina.



Comfort and fit

With curved surfaces and subtle patient side marking, each ophthalmoscope has been designed to fit snugly into the orbital bone. Unlike other straight sided brands, the contoured, curved ophthalmoscope head guarantees an optimal viewing angle and the smooth line surfaces ensure a patient friendly non-threatening instrument.

Lithium and NiCad handles

Keeler hand helds are supplied on a lithium slimline, lightweight robust handle or the traditional NiCad handle.

Light, tough and built to last

Keeler ophthalmoscopes are built from resilient, lightweight materials to give you many years of trouble free service. High impact resistant covers combined with a strong metal chassis protect the carefully aligned optics and allow Keeler ophthalmoscopes to withstand the rigors of everyday use for years to come.

Controllable light for bright, clear images

The bright white Halogen and Xenon illumination is fully adjustable from zero. This ensures the comfort of your patients and the best possible diagnosis for you.

Reflex free images

Individually controlled optics reduce the effect of corneal reflex while minimizing shadows and providing clearer retinal visualization.



Apertures, graticules and filters



Wide Angle -

Illuminates the largest area of fundus for the best possible general diagnosis through a dilated pupil.



Intermediate -

Permits easier access through an undilated pupil and in peripheral examination. Particularly useful in pediatric examination.



Macular -

Designed specifically for examination of the macular region of the fundus where a larger beam would create excessive pupillary reaction or patient discomfort.



Slit -

Used primarily to determine retinal elevations and depressions but may also be used to assess anterior chamber depth.



Glaucoma -

Projects a graticule onto the retina to assess the optic cup/disc ratio as an aid to glaucoma diagnosis.



Fixation Cross -

Projects a graticule onto the retina for assessment of the degree and direction of eccentric fixation.



Semi Circle -

Provides a combination of depth perception and field of view.



Red Free -

The red free filter is used to examine blood vessels in fine detail. By filtering out the red light, blood vessels are silhouetted black against a dark green background.



Cobalt Blue -

Used in conjunction with fluorescein dye for the detection and examination of corneal scars and abrasions.

Professional Ophthalmoscope

Total control at your fingertips

The Professional Ophthalmoscope has been designed to ensure ultimate control. Lenses, graticules and filters can all be introduced at the touch of a fingertip without the need to pull away from the patient.

Xenon illumination

The Professional also uses Xenon illumination for a brighter and whiter long lasting light, giving you more power and fewer bulb changes.

Positive action maywheel and comprehensive lens range

The positive action easy access maywheel not only allows you to dial up the required lens quickly, but also



Part Numbers

1125-P-1180	3.6v Professional Ophthalmoscope on Lithium Handle (no stand adaptor)
1125-P-1124	3.6v Professional Ophthalmoscope on Lithium Handle with stand adaptor
1128-P-1004	3.6v Professional Ophthalmoscope head only

gives you total control of where you are in the lens range making each exam quicker and easier. The extensive range of +29D to -30D in single diopter steps ensures easy examination of all ocular structures and covers a wide range of patient/user prescriptions. A quick step swing of +/- 20D helps speed up diagnosis.

Swing over filter

The red free filter for enhanced vessel examination can be used in conjunction with any of the 6 diagnostic beams.

Brow rest

The integral soft brow rest allows for easy positioning and protects your lenses if you are a spectacle wearer.



Specialist Ophthalmoscope

The World's finest

We recognize that illumination is of fundamental importance to good diagnosis. That's why we have selected Xenon illumination. This brighter and whiter long lasting light will meet any diagnostic challenge! With Xenon you have the power to diagnose even through a difficult eye. And because it is longer lasting that means fewer bulb changes giving greater peace of mind.



Part Numbers

1132-P-1025	3.6v Specialist Ophthalmoscope on Lithium Handle (no stand adaptor)
1132-P-1025	3.6v Specialist Ophthalmoscope on Lithium Handle with stand adaptor
1132-P-1050	3.6v Specialist Ophthalmoscope head only
1132-P-5000	2.8v Specialist Ophthalmoscope head only

Expanded diopter range

The Specialist offers the most comprehensive lens range available in a direct ophthalmoscope +44D to -45D lens range in 1D steps, guarantees optimal diagnosis in any situation.

Premium optics

The Morton Lens Track system, made up of individually ground glass lenses, ensures an optimal view.

Pupillometer gauge

The pupillometer comparison disc allows quick and easy estimation of pupil size.



Professional Combi Retinoscope

A genuine bimodal retinoscope

Optimized for outstanding performance with either a Streak or Spot beam with a simple bulb change.

Brilliant halogen illumination

With up to 600 lux of brilliant Halogen illumination, the Professional Combi guarantees you enough light to refract even the most difficult eyes.

Neutralization check (Patented)

This is the only Retinoscope allowing rapid confirmation of neutralization. In both Streak and Spot modes you can change the beam from divergent to convergent enabling you to cross check the accuracy of the neutral point. The ability to double check neutralization in the upper position guarantees the assessment is correct the first time and every time.

Precision magnetic control (Patented)

The Professional Combi offers improved 360° access to a single control for both rotation and convergence adjustments. The precision movements are achieved by use of rare earth magnet technology.

Two position aperture

A simple finger movement allows a choice of 4mm or 1.7mm aperture to optimize brightness or resolution of the retinal reflex.

Unique spectacle bar

An interchangeable soft pad is available for spectacle wearers.

Part Numbers

1322-P-1060

3.6v Professional Combi Streak Retinoscope on Lithium Handle (no stand adaptor)

1302-P-1007

3.6v Professional Combi Streak Retinoscope head only



Pocket Ophthalmoscope

Portable and compact

Full diagnostic capability in a compact instrument make the Pocket Ophthalmoscope ideal for the practitioner on the move.

Portable

An ideal choice for domiciliary and ward use or as a back up instrument.

Comprehensive lens range

Lens range from +20D (+1,2,3,4,6,10,15,20) to -20D (-1,2,3,5,10,15,20) for clear and effortless examination of ocular structures.

Pocket clip

It has a strong metal clip that can be attached to a pocket and is powered by standard AA batteries.



Part Number

1102-P-1041

2.8v Pocket Ophthalmoscope on AA battery handle



Monocular Indirect Ophthalmoscope

Wide Angle Twin Mag^{NP}

Ophthalmoscopy just got easier!

The Keeler Wide Angle Twin Mag has a 10x larger field of view and is easier to use than a direct ophthalmoscope. The glass optical system provides non-polarized light giving you two exceptional views and magnifications in a lightweight, easy to use instrument. You will immediately see the difference!

Non-polarized light

The non-polarized Xenon illumination provides whiter, brighter light that does not compromise your diagnostic information so it minimizes your chance of missing a tumor, any critical vascular changes and early macular degeneration.

Lightweight and comfortable to hold

It has been designed to fit comfortably into one hand with all easy to operate controls conveniently located at your fingertips.

Small pupil capabilities

The Wide Angle Twin Mag provides you with the ability to view easily and quickly through undilated pupils.

No field loss with spectacles

The unique extendable eyepiece allows you to view the retina with or without glasses with the same field of view.

Glaucoma diagnosis and monitoring

The Wide Angle Twin Mag provides easy assessment of cup to disc ratio as an aid to glaucoma diagnosis and monitoring.

Corneal examination

Combined with the cobalt blue filter, this unique lens (optional) allows examination of corneal pathology and contact lens fitting.

Multiple aperture selections

The large range of built-in apertures provides easy changes from Macular (small pupil), Intermediate, Large, Slit, Glaucoma and Semi-Circle.

Compatible with Keeler NiCad or Lithium handles and chargers

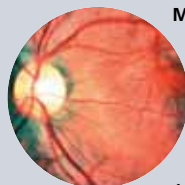
The Wide Angle can be connected to your existing NiCad or Lithium handle.

Filters

The red free and cobalt blue filters can be used with the large apertures.

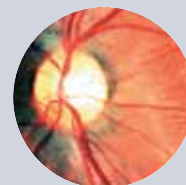


Twin Mag delivers 2 reflex and shadow free images of the retina



Mag 1

The large 25° field of view is ideal for general examination and provides 15X retinal magnification and a 10X larger view of the retina than with a standard ophthalmoscope.



Mag 2

The 17.5° field of view is ideal for increased disc and macular detail and provides 22.5X retinal magnification.



Part Numbers	1130-P-5004	Wide Angle Twin Mag Ophthalmoscope head only
	1130-P-7001	Patient Brow Rest
	1130-P-7000	Corneal Lens

Direct Ophthalmoscope Power Supplies and Handles

Lithium-ion Double Charger

The compact charger takes two handles and will fit neatly into your immediate testing environment, allowing easy access to your hand held instruments. The charger can be table top or wall mounted.

Provides over 2 hours of continuous use

2 hour continuous use is ideal for long examinations especially while first learning with your instrument.

Fast charge in 2 hours

A 2 hour fast charge means your instrument is always ready for use.

LED displays

LEDs indicate when battery life is low, charging or fully charged.



Part Number 1941-P-1368 Lithium-ion Double Charger

Lithium-ion Mini Charger

The Lithium-ion Mini charger can be connected quickly and simply to the base of your Keeler handle, making it the perfect choice for domiciliary visits or practitioners on the move.

Provides over 2 hours of continuous use

2 hours continuous use is ideal for long examinations, especially while first learning with your instrument.

Fast charge in 2 hours

A 2 hour fast charge means your instrument is always ready for use.

LED displays

LEDs indicate when battery life is low, charging or fully charged.

Versatile

Instruments can still be used while the battery is charging.



Part Number 1941-P-1341 Mini Lithium-ion Charger

Handles and Lithium Adaptor

Keeler's traditional NiCad and Lithium handles will charge in most standard charging wells. The small and sleek lithium handle adaptor

converts your Keeler Lithium handle to charge in most standard refraction stands.

Part Numbers

1911-P-1201	3.6v Slimline Handle with Lithium-ion Battery (no stand adaptor)
1911-P-1244	3.6v Slimline Handle with Lithium-ion Battery and stand adaptor
3301-P-7410	Lithium Handle Stand Adaptor



Halberg Trial Lens Clips

Halberg Trial Clips have become a required addition to every refraction stand. These useful and inexpensive clips may be fitted

over your patient's spectacle frame. Each cell has space for three lenses and the rubber coating on the clip protects the spectacle lenses.

Part Number 2207-P-1026 Halberg Trial Clips with Case



Maddox Wing Test

Convenient hand held quick and efficient near test for heterophoria which is measured on the red vertical scale.

Esophoria and exophoria are measured by the white horizontal scale. Cyclophoria may be assessed by moving the red arrow pointer parallel to the horizontal scale.

Part Number 2301-P-1022 Maddox Wing Test



Keeler Horizontal Vertical Prism Bar

Comes complete in it's own case. A unique integrated design with no need for two separate bars.

Optical surfaces are recessed for optimum protection. Extensive prism power 1,2,3,4,6,8,10,15,20,25,30 and 36 diopters.

Part Number 2203-P-1002 Keeler Horizontal/Vertical Prism Bar



Keeler Retinoscopy Rack

An excellent tool for fast objective refraction, particularly with uncooperative patients and children.

Comes complete in its own carrying case. There are 24 lenses, 13mm diameter -6D to +6D in 0.5D steps. Mounted in tough, yet light alloy frame.

Part Number 2202-P-1019 Keeler Retinoscopy Rack



Amsler Manual

Assists in early recognition of changes in the macula and foveal areas. Only 6 patient responses required for

diagnosis of functional disturbances, from small scotoma to distortions. Full instructions include the interpretation of results.

Part Numbers 2215-P-1034 Amsler Manual
2215-P-7050 Amsler Recording Charts



Surgical Loupes

Superior loupes and lights for life

Laser aligned optics for magnification of superb optical quality; a lightweight aluminum assembly and precise pupil alignment system make Keeler Loupes the perfect choice for thousands of surgical professionals.

SuperVu SL Mini Galilean System

Lightweight with great optics

Mini Loupes are designed to be ultra light and comfortable with minimal compromise in field of view. Absolute comfort is our achievement; excellent peripheral vision is the added benefit of our slim design.



SuperVu SL Galilean System

Delivery 2.5x magnification

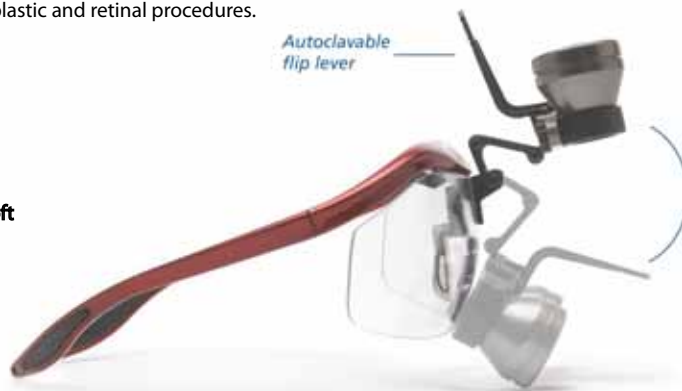
mounted loupes and optimal focal alignment, eliminating headache and eyestrain.

The true benefit of this system is ease of use. Movement while maintaining focal clarity is made possible due to a superior depth of field. The lightweight aluminum bar and individual pupillary adjustment provides stability for the

Ideal for ocular plastic and retinal procedures.

Order frame seperately.

Keeler SuperVu SL magnification systems are supplied in a soft carrying case and include protective caps, autoclavable flip lever and cleaning cloth.



Protective caps

Autoclavable flip lever



SuperVu SL Hi-Res Galilean System

Delivery 3.0x magnification

SuperVu Hi-Resolution loupe provides **greater definition** than a standard Gallilean with **15% increased field of view**. The Hi-Res five element system provides a true **3x magnification** in a lightweight system.



Keeler Sport Frames

All Keeler loupes are available on the new Keeler Sport Frame.

Stylish, comfortable and attractive, the new Keeler Sport frame is available in a choice of bright colors as shown. The Keeler Sport frame can be worn over your own glasses, or your prescription can be incorporated into the supplied holder.



Sky Blue



Blue



Red



Black

SuperVu XL Prismatic System

Delivery 3.5x, 4.5x and 5.5x magnification.

Higher magnification for advanced surgical procedures. Prismatic quality guarantees a true image. Edge to edge clarity and precise color rendition is ideal for intricate surgical applications. The XL's precision lenses are treated with an anti-reflective coating to produce a superior image.

Ideal for surgeons who require higher magnification.

Order frame separately.

Keeler SuperVu XL magnification systems are supplied in a soft carrying case and include protective caps, autoclavable flip lever and cleaning cloth.



K-L.E.D. gives long lasting white light

The K-LED rechargeable headlamp system clips quickly and easily onto the Loupes bar to give up to a massive 18,000 Lux of homogenous white LED powered illumination. The lithium (Li) battery pack will give up to 4 hours of continuous use before it needs replacing into its charging well on the base station.

Choose between the standard fitting or the co-axial fitting to suit your surgical preference.



Co-axial fitting



Standard fitting

Designed for comfort

Choose from the new Keeler frame or a headband mounted system to mount your loupes. Adaptable to all prescriptions.



Keeler Loupes & Lights

2.5x Mini

2112-P-2247	13" Working Distance (34 cm)
2112-P-2248	16" Working Distance (42 cm)
2112-P-2249	18" Working Distance (46 cm)
2112-P-2250	20" Working Distance (50 cm)

2.5x Standard

2112-P-1006	13" Working Distance (34 cm)
2112-P-1007	16" Working Distance (42 cm)
2112-P-1008	18" Working Distance (46 cm)
2112-P-1009	20" Working Distance (50 cm)

3.0x Mag - Hi-Resolution

2112-P-1050	13" Working Distance (34 cm)
2112-P-1051	16" Working Distance (42 cm)
2112-P-1052	18" Working Distance (46 cm)
2112-P-1053	20" Working Distance (50 cm)

3.5x Mag

2113-P-6004	13" Working Distance (34 cm)
2113-P-6021	16" Working Distance (42 cm)
2113-P-6022	18" Working Distance (46 cm)
2113-P-6007	20" Working Distance (50 cm)

Sport Frame 130mm Temples (Small)

2199-P-1982	Black
2199-P-1983	Blue
2199-P-1984	Red
2199-P-1985	Light Blue

4.5x Mag

2113-P-6008	13" Working Distance (34 cm)
2113-P-6025	16" Working Distance (42 cm)
2113-P-6010	18" Working Distance (46 cm)
2113-P-6011	20" Working Distance (50 cm)

5.5x Mag

2113-P-6012	13" Working Distance (34 cm)
2113-P-6029	16" Working Distance (42 cm)
2113-P-6014	18" Working Distance (46 cm)
2113-P-6015	20" Working Distance (50 cm)

LED System for Sport Frame

Standard

2004-P-1007	LED, Clip, (2) Lithium Batteries, Universal Power Supply & Charging Tray
2004-P-1012	LED, Clip, (1) Lithium Battery, Universal Power Supply & Single Charger

Coaxial

2004-P-1017	LED, Clip, (2) Lithium Batteries, Universal Power Supply & Charging Tray
2004-P-1019	LED, Clip, (1) Lithium Battery, Universal Power Supply & Single Charger

LED System with Universal Clip

2004-P-1009	LED, Clip, (2) Lithium Batteries, Universal Power Supply & Charging Tray
-------------	--

Sport Frame 135mm Temples (Medium)

2199-P-1500	Black
2199-P-1519	Blue
2199-P-1527	Red
2199-P-1535	Light Blue

Sport Frame 150mm Temples (Large)

2199-P-1543	Black
2199-P-1551	Blue
2199-P-1578	Red
2199-P-1586	Light Blue

Keeler Loupe systems are supplied in a soft carrying case and include protective caps, sterilizable flip lever, and cleaning cloth.

Order frame separately.

Cryo Surgical Systems

Keeler, the first name in Cryo Ophthalmic Surgery has been supplying the Ophthalmic Surgeon with high performance, reliable Cryo Systems since 1966.

Changes in technology and the surgeons' requirements have allowed us to improve and expand our range of Cryo Ophthalmic Instruments.



Keeler Cryomatic

The new standard in ophthalmic cryo-surgery



The Cryomatic console employs smart technology

What does this mean?

In this case it means that there is electronic communication between the console and any probe that is connected to it. The console therefore knows the optimum operating parameters for any given probe and self-adjusts accordingly. Put another way, the console auto-configures to probe characteristics.

What are the benefits?

The major advantages are that there is no longer any need to manually set up the system at the start of or during any procedure and that every probe will automatically always perform optimally.

Does this mean that the gas pressure is set automatically?

Yes it does. No manual adjustment is necessary.

Another unique feature of the Cryomatic console is that it has back-flush facility

What does this mean?

During purging and about 20 seconds after the footswitch is released, the gas in the system reverses its flow, but at a lower pressure.

What are the benefits?

This changed direction of gas after a freeze moves any debris or moisture that may be accumulating, thereby virtually eliminating the risk of problems during surgery.

Keeler Cryomatic System Probes

The Probes

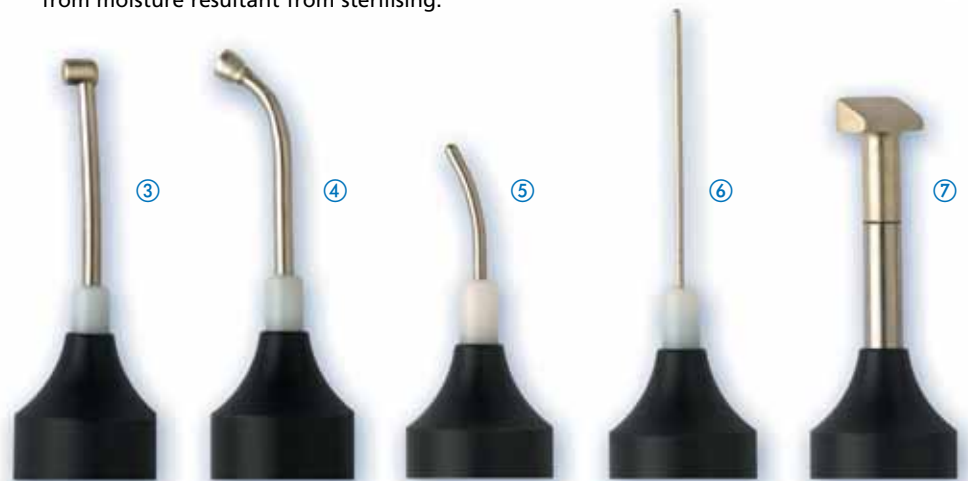
- ① Standard Retinal Probe
2509-P-8000
- ② Extended Retinal Probe
2509-P-8001

Special Order Range

- ③ Mid-reach Retinal Probe
2509-P-8002
- ④ Glaucoma Probe
2509-P-8005
- ⑤ Curved Cataract Probe
2509-P-8004
- ⑥ Intra-vitreous Probe
2509-P-8003
- ⑦ Collins Trichiasis Probe
2509-P8006

The Keeler Cryomatic System including the probes, results from a complete re-engineering process aimed at producing greater reliability and a better freeze, as well as simplicity of set-up and operation, all of which combine to make it uniquely superior.

Whilst retaining classical tip configurations, the probes and their manufacturing processes have been fundamentally redesigned to minimise blocking due to impurities in the cryogen gas or from moisture resultant from sterilising.



Part Numbers

Cryomatic Console
2509-P-1000

Cryomatic Console with Footswitch, High Pressure Hose, Exhaust Hose, (Specify CO₂, or N₂O Gas use when ordering) and User Manual complete.

Cryomatic Probes

2509-P-8000	2.5 mm Standard Retinal Probe
2509-P-8001	2.5 mm Extended Retinal Probe
2509-P-8002	2.5 mm Mid-Reach Retinal Probe
2509-P-8003	0.89 mm Intra Vitreal Probe
2509-P-8004	1.5 mm Curved Cataract Probe
2509-P-8005	3.0 mm Glaucoma Probe
2509-P-8006	4x10 mm Collins Trichiasis Pencil



*Cryomatic Stand –
Holds Cryomatic and
one gas cylinder*

*Actual product may vary
slightly from what is
shown in this image.*

Keeler Cryomatic Accessory

Part Number	3304-K-1085	Cryomatic Stand (Trolley)
--------------------	--------------------	----------------------------------

Keeler Surgical Room Supplies

Keeler Chan Wristrest

The Chan Wristrest has become an important standard in busy operating rooms. The unique height adjustable horseshoe bar encircles the patient's head and supports arms and wrists during ophthalmic surgery. The horseshoe bar facilitates easy draping especially when fluids are collected. The bar also flips up and out of the way for easy patient transfer on and off the table. The metal plate fits under the mattress of the O.R. table. Adapts to all O.R. tables and stretchers.



Part Number 1899-K-1163 Chain Wristrest with Pillow

Surgical Foam Headrest

The Surgical Foam Headrest automatically secures the patient's head while making the patient as comfortable as possible. Several center inserts can be removed to adjust for any

head size from pediatric to adult. The pillow can be autoclaved when necessary. From surgical suite to the recovery room this unique pillow will ensure correct patient positioning.



Part Number 1899-K-1219 Surgical Foam Headrest

Disposable Drape Support

The Nevyas Drape Support is the simple and inexpensive way to establish a zone of comfort for your patients during ophthalmic surgery

which requires draping over the nose and mouth. Packaged in sets of 24, minimum order 4 packages.

Part Number	1899-K-1243	Nevyas Drape Supports (Pkg of 24 – Minimum order of 4 Pkgs)
--------------------	--------------------	--



Machemer Stool

This stool is unquestionably the finest operating stool available today. This stool was designed especially for the ophthalmic surgeon who must remain absolutely steady for long periods of time. A poor stool can unexpectedly shift resulting in unanticipated hand motion. The Machemer Stool has a solid base of five sturdy castors. A 'foot bar' allows the surgeon to adjust the height from 22" to 33" and lock out the seat swivel. The seat is constructed of one continuous piece of heavy sculptured foam and covered in conductive fabric without seams. This unique design reduces pressure on the sciatic nerve and remains comfortable through even the longest procedures.



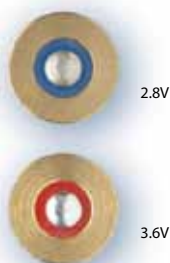
Part Number	1899-K-1112	Machemer Stool
--------------------	--------------------	----------------

Bulbs and Accessories

Accurate diagnosis depends upon a number of factors. Of these, top quality illumination ranks as one of the most important. Only excellent visualization allows you to use your diagnostic skills to the full. For this reason, we at Keeler have invested heavily in our bulb manufacturing facility at Barnsley.

All Keeler instruments use genuine Halogen and Xenon technology, yielding a brighter, whiter illumination and a longer life.

Look at the bottom of your bulb to identify if your instrument is 2.8V (Dry cell battery) or 3.6V (Rechargeable battery).



Vantage Plus LED Module



NEW



All Pupil II LED Module



Vantage Plus & All Pupil II LED Modules

- LED provides better detail, brighter, whiter illumination
- Freedom from purchasing bulbs
- The LED life expectancy is up to 10,000 hours
- 5 year warranty

Bulbs

Pocket Ophthalmoscope bulb

Part Number 1011-P-7050



Professional Ophthalmoscope bulb

Part Numbers 1011-P-7106 2.8V or 1011-P-7114 3.6V



Specialist/Vista Ophthalmoscope bulb

Part Numbers 1011-P-7042 2.8V or 1011-P-7034 3.6V



These bulbs are supplied in packs of two

Professional/Vista Streak Retinoscope bulb, 35mm length

Part Numbers 1013-P-7008 2.8V Professional or 1013-P-7009 3.6V Professional
Previous Model Retinoscopes/20mm length
1013-P-7002 2.8V or 1013-P-7003 3.6V



Professional/Vista Spot Retinoscope bulb, 35mm length

Part Numbers 1013-P-7006 2.8V or 1013-P-7007 3.6V
Previous Model Retinoscopes/20mm length
1013-P-7000 2.8V or 1013-P-7001 3.6V



All Pupil and Vantage bulb



Part Number 1012-P-7003

Wide Angle Twin Mag Ophthalmoscope bulb



Part Number 1012-P-7004

Spectra bulb



Part Number 1299-P-7075

Pulsair bulb for Mark 1, 2000, 3000 and EasyEye



Part Number 1024-P-7156

Fison bulb



Part Number 1012-P-7000

Vantage Plus bulb



Part Number 1012-P-5241

This bulb is supplied singularly

Case Options

Spectra Plus Case



New slim professional carrying case!

Transport your instrument in style and choose if you want to use wheels or carry it on your shoulder. For VantagePlus or AllPupil II.

Shoulder Case



Roller Case

Part Numbers 3412-P-7002
3412-P-7000
EP29-43759

Spectra Plus Soft Case
Vantage Plus or All Pupil Case - With Wheels
Vantage Plus or All Pupil Case - Without Wheels

Indirect Ophthalmoscope Accessories

Indirect Teaching Mirrors

Vantage Plus Teaching Mirror



Part Number 1202-P-7205

All Pupil II Teaching Mirror



Part Number 1202-P-7117

Spectra Plus Teaching Mirror



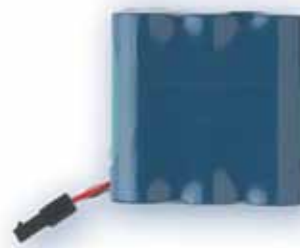
Part Number 1205-P-7000



Pencil Type, Small and Large Depressors

Part Numbers	Pencil Type	1201-P-6076
	Small	1201-P-6075 / Large 1201-P-6067

SmartPack Battery



Part Number EP39-22079

Direct Ophthalmoscope Accessories

Rubber Handle Sleeve



Part Number EP29-05365

Lithium Battery



Part Number EP39-18918

Near Point Cards for Retinoscopy



Part Number 1321-P-7005

NiCad Battery



Part Number 1919-P-5020

Keeler Instruments Inc.
456 Parkway, Broomall
PA 19008 USA
Toll Free: 1 800 523 5620
Tel: 610 353 4350
Fax: 610 353 7814
Email: keeler@keelerusa.com
Website: www.keelerusa.com

Keeler