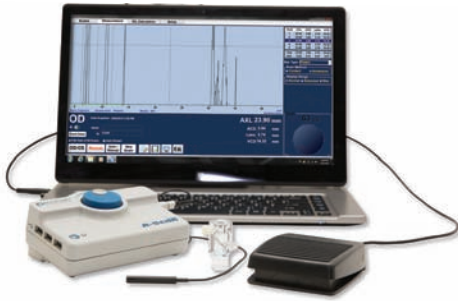


Diagnostic Equipment



A-Scan Plus Connect®

Item No. 24-4400

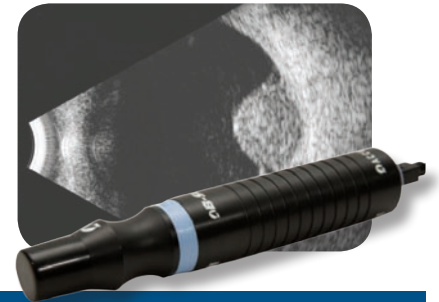
Portable design while being an effective solution for measuring and calculating all of your patients, including dense cataracts, and refining your surgical outcomes.



AccuPen®

Item No. 24-3000

Gravity Offset Technology requires less calibration in any testing position while providing up to 9 accurate IOP measurements that can be stored.



B-Scan Plus®

Item No. 24-6100

Portable probe that provides HD imaging and assessment of the posterior segment while a user-friendly interface can store and share information easily.



Pach VI®

Item No. 24-6200

Accurate and easy-to-use table top pachymeter that converts IOP measurements in seconds.



PachPen®

Item No. 24-5100

Accurate, portable, ergonomic, and lightweight pachymeter that converts IOP measurements in seconds.



UBM Plus®

Item No. 24-6300

Portable probe that provides HD imaging and assessment of the anterior segment while a user-friendly interface can store and share information easily.

Distributed by:



1-800-979-2020 • 610-889-0200
+31 [0] 485-350300 Europe
FAX 610-889-3233 • info@accutome.com