



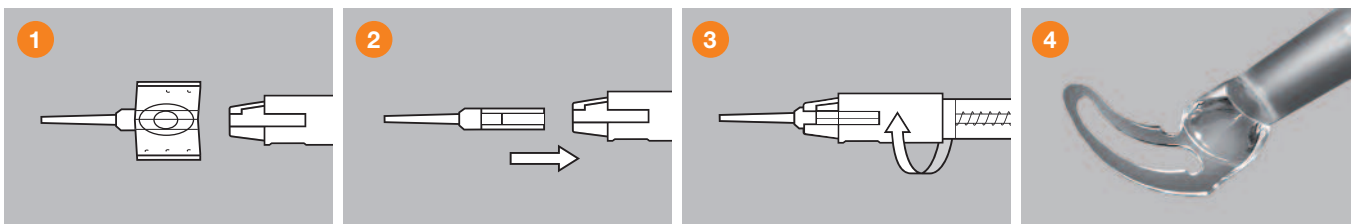
### Technical data

Pusher	Silicon cushion for hydraulic injections
Loading chamber	with ring locking system
Sterilization	Ethylene Oxide
Packaging	Special blister "2 in 1": Cartridge + Injector

### Cartridge

Winglets	with special locking system
Loading chamber	with guiding rails for an easy placement of the lens
Incision size	from 1.6 to 2.5 mm

	External diameter	Estimated incision size
<b>MEDJET MC 1.6</b>	1.41 mm	1.6–1.7 mm
<b>MEDJET MB 1.8</b>	1.60 mm	1.8–2.0 mm
<b>MEDJET MA 2.2</b>	1.74 mm	2.2–2.3 mm
<b>MEDJET  MA 2.2 HB</b>	1.74 mm	2.2–2.3 mm
<b>MEDJET  MX 2.4 HB</b>	1.89 mm	2.4–2.5 mm



1. Lubricate the funnel and the loading barrel of the cartridge with viscoelastic solution (preferably **dispersive** like HPMC or similar). Place the lens in the middle of the cartridge. Carefully push the optic and the haptics under the guiding rail and close the cartridge. Fill up the cartridge with viscoelastic solution behind the lens.
2. Load the cartridge.
3. Lock it in place by turning the ring clockwise.
4. Gently inject the lens. For a smooth and precise insertion of the lens into the capsular bag a slight rotation of the injector can be useful.

LA-IMCMA 03 201109